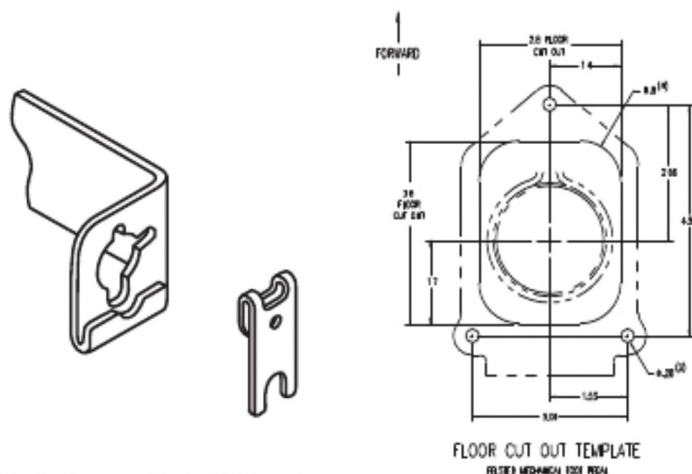
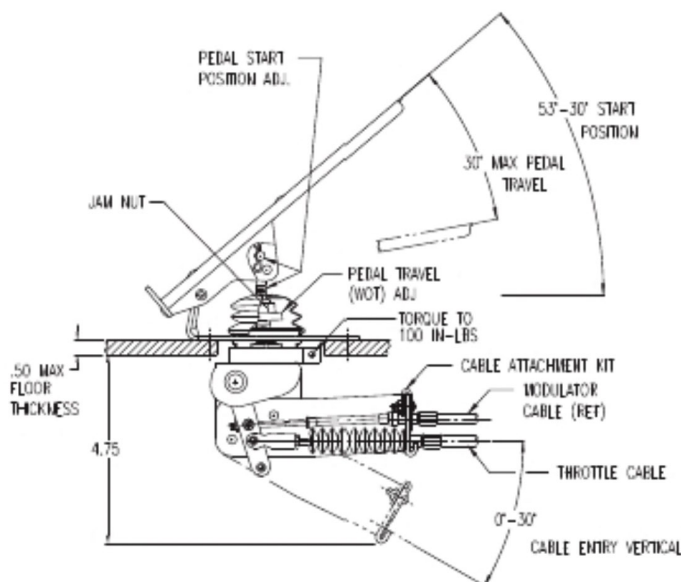


Felsted Foot Pedal - Mechanical

The Felsted foot pedal is the heavy-duty choice for trucks, buses, agricultural equipment, construction equipment, and virtually all other applications that call for a foot operated control. That's because its rugged steel stamping construction offers far greater rigidity, durability, and reliability than aluminum die castings. And because it's designed with oil impregnated bronze bearings that won't wear out like nylon bearings. For ease of installation, it bolts to the floor with three point mounting and incorporates a unique keyhole mount for the cable hub that requires only a single fastener. For flexibility, it has 360° adjustability for cable entry, is available with either two-inch or three-inch travel, and either three or four series cable. And for even greater flexibility, you can connect a modulator to the pedal, eliminating the need for cumbersome linkages to the engine governor. Other features include a self-cleaning boot that deflects dirt and debris, a double torsion pedal return spring, adjustable pedal height, and a factory assembled heel rest. When used with Felsted cables and modulators, the Felsted Foot Pedal gives you a complete system you can rely on.



Single Fastener Keyhole Mounting System For Easy Installation
(Note: Felsted cables and pedal modulators must be used to engage keyhole mounting feature.)

Floor Cut Out Template for Felsted Mechanical Foot Pedal
All measurements in inches.

Specifications subject to change without notice.

*Felsted cables and modulators must be used to engage keyhole mounting system.

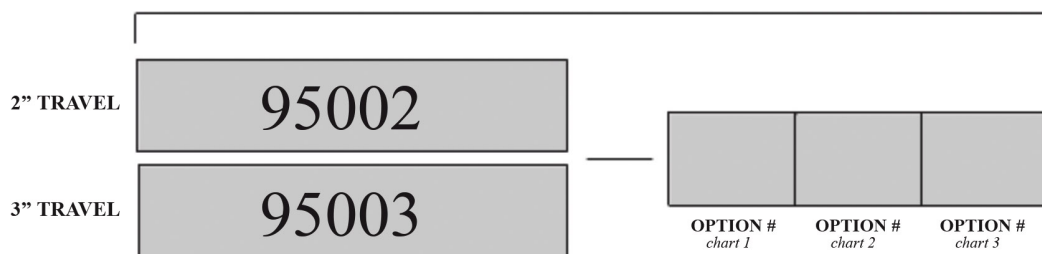
**Based on load applied to pedal surface 6 inches from pedal pivot and 90° to surface.

How to Order a Foot Pedal - Mechanical

Ordering the foot pedal that meets your needs is not difficult. Simply follow the instructions below to create the assembly part number. The first five numbers will be followed by three numbers that are chosen from the charts below.

1. Choose either a 2" or 3" Travel. This number is your BASIC NUMBER.
2. Choose the appropriate options from charts 1, 2, and 3.
3. Place each option number that you have chosen into its corresponding colored box.
4. Combine all eight numbers to create the ASSEMBLY PART NUMBER.

possibly be 95002-300. (2" travel, 3 series, no heel rest, no modulator)



| CABLE SERIES OPTIONS CHART 1 | |
|------------------------------|----------|
| 3 Series | 3 |
| 4 Series | 4 |

| HEEL REST OPTIONS CHART 2 | |
|---------------------------|----------|
| No Heel Rest | 0 |
| With Heel Rest | 1 |

| MODULATOR PIVOT CHART 3 | |
|-------------------------|----------|
| No Modulator | 0 |
| With Pivot Modulator | 1 |

Foot Pedal Service Parts

Cable Hanger Kit

99000-1 = 2" Travel
99000-2 = 3" Travel

Includes:
Hanger Assembly
Flange Nuts (2)

Cable Attach Kit

99001-1 = 3 Series
99001-2 = 4 Series

Includes:
Lock Plate Assembly and Screw
Pin and Hair Pin Cotter

Clevis

Upper Boot Kit

99002-1

Includes:
Upper Boot
Pin and Hair Pin Cotter
Jam Nut

Heel Rest Kit

99003-1

Includes:
Heel Rest
Self Tap Screws (2)

Modulators for Foot Pedal *

Modulators

98000-Length = 2" Travel
98001-Length = 3" Travel

Allison Transmissions Only

Cables *

3 Series

#10-32UNF-2A

352X3-Length = 2" Travel
353X3-Length = 3" Travel

4 Series

1/4-28UNF-2A

452X3-Length = 2" Travel
453X3-Length = 3" Travel

* Felsted cables and modulators must be used to engage keyhole mounting system.

Other configurations available. Consult Factory.
X = Specify 2 for bulkhead, 3 for clamp.